

JD-H Gauges

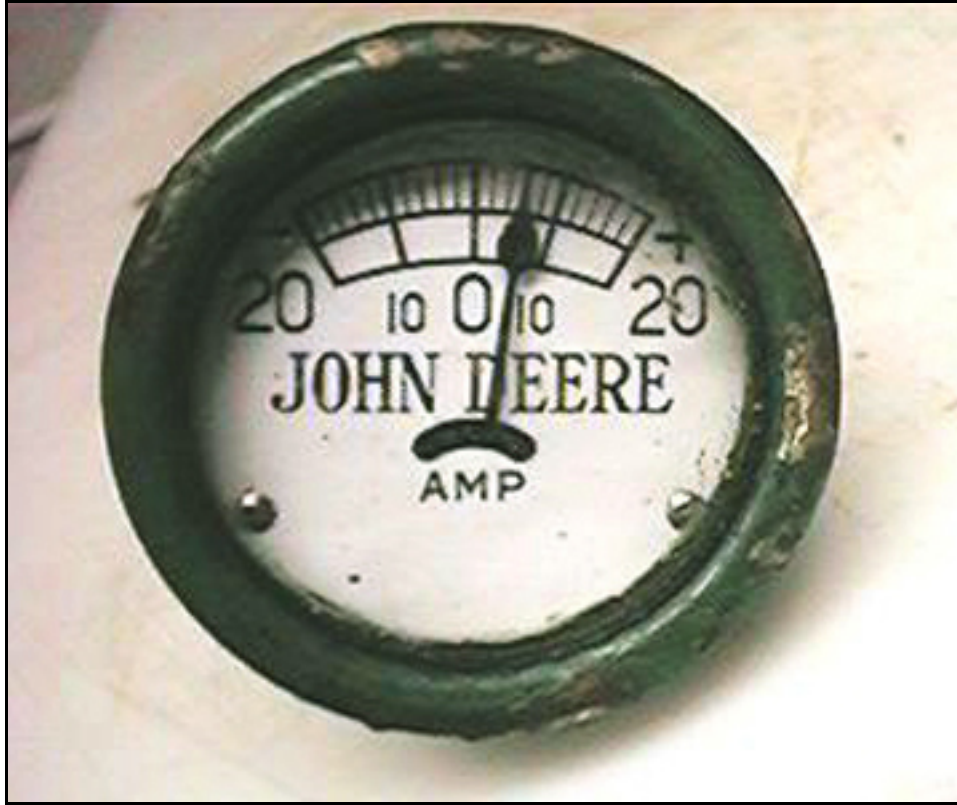
4-9-2010

For the JD "H" tractor, original gauges had white faces and their rims were painted JD green. The green rims were in accord with the Deere painting plan. The gauges were already installed by the time the tractor arrived at its paint station, and the painters masked off only the glass face piece, permitting the rim to be painted green.

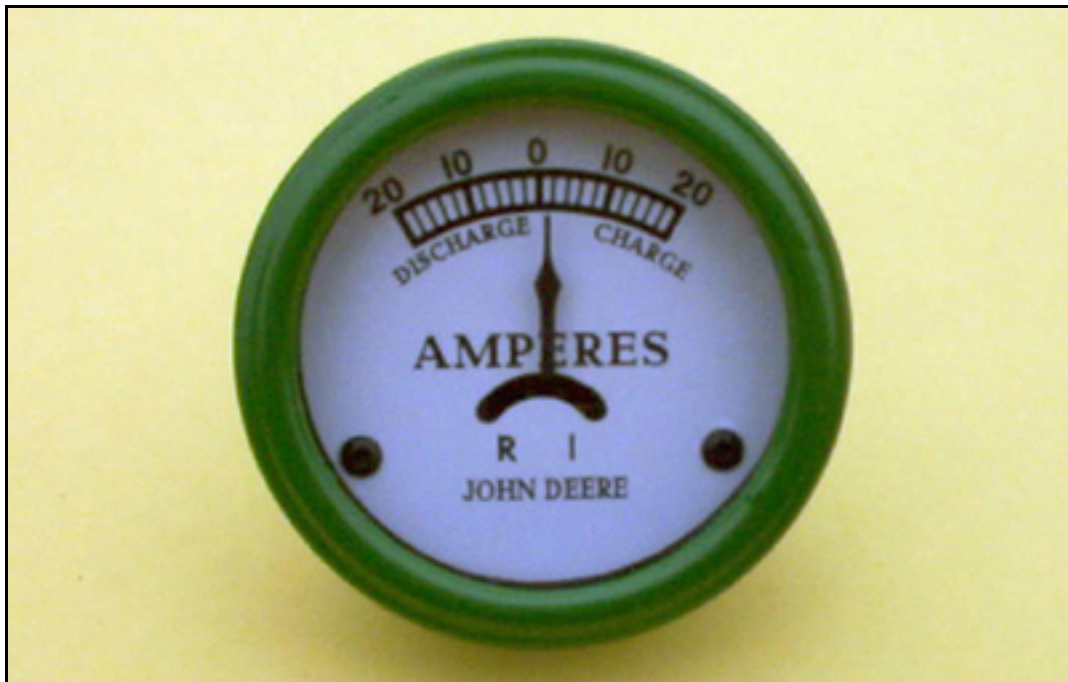
From all available sources at this writing, it has become evident that all of the gauges were changed during John Deere Model "H" Production. Further, the very limited evidence so far gathered points to a changeover between model years 1943 and 1944.

For the gauges shown as used on the later tractors, these are the best renditions of what once was! To be frank, there are differences. Many constraints come into play. Basic gauge construction and technology in today's market is changed. For instance, the indicator needle fulcrum points aren't where they were. Such modern day market availability conditions must be worked around, and the pictures you see depicting the "later" gauges are the complex results of marketplace availability and creative adaptability.

There are some interesting distinctions in the early gauges versus those that followed. In the early gauges, the words JOHN DEERE are prominent while only a single, smaller word identified the gauge function. In the later gauges, we see John Deere in smaller letters, and the gauge function more boldly expressed -- to include a fullest description of what is being measured.



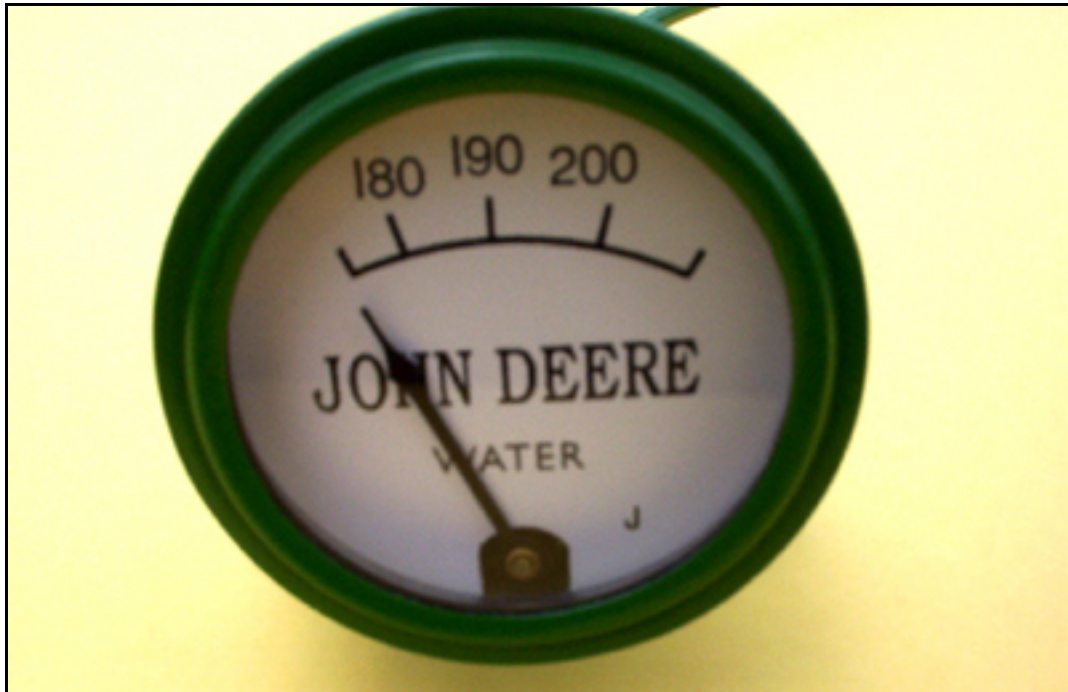
Amperes Gauge used on Early John Deere "H" Tractors



Amperes Gauge used on Later John Deere "H" Tractors

The early water temperature gauge had a single-line scale and did not have the word "TEMPERATURE" on its face. The later gauge is a genuine John Deere replacement part for all

H-Series tractors, but not original for the earlier tractors. These later gauge data may not hold for later A & B tractors which, with pressurized systems, had higher temperature limits -- up to 230 degrees (F).

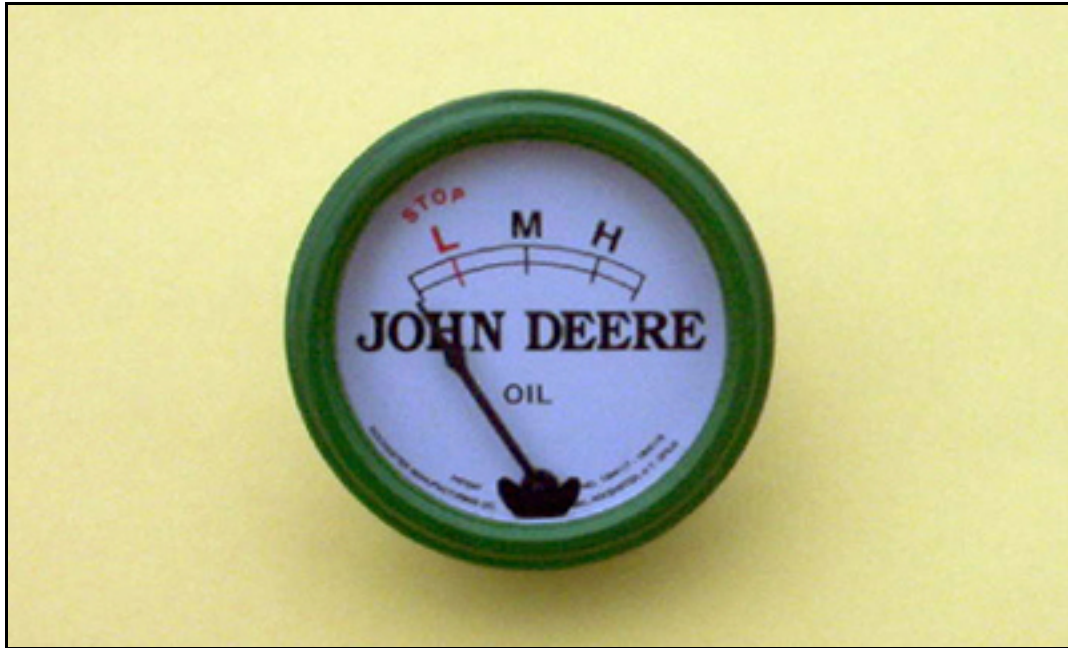


Water Temperature Gauge used on Early John Deere "H" Tractors



Water Temperature Gauge used on Later John Deere "H" Tractors

Oil pressure gauges, likewise, were changed in mid-production. From 1939 through 1943, the oil pressure gauge reads "OIL," and the red letters "L" and "STOP" appear atop the scale. Year 1944 to the end of production, the two scale lines are further apart, the gauge reads "OIL PRESSURE," and the word "STOP" appears below the scale. The name "JOHN DEERE" is also affixed beneath the words "OIL PRESSURE".



Oil Pressure Gauge used on Early John Deere "H" Tractors



Oil Pressure Gauge used on Later John Deere "H" Tractors

There are many who claim to be expert in JD "H" Gauges, but I have indeed found one who has done the needed research and produces a high quality product; he is Jerry Trcka of

Evergreen Restoration. He has been working hand in hand with Travis Jorde (**Jorde's Decals**) who is supplying a high quality vinyl decal for the face of those gauges Jerry rebuilds. Jerry can be, and should be the source for gauges. Alternately, if your old gauges still have full internal function but cosmetically shot, he can restore those gauges for you. He is listed (by his name) in Appendix 3 of the John Deere Model "H" Restoration Guide, can be found as an advertiser in Two Cylinder and Green Magazines, or can be reached by US mail, telephone or email as follows:

**Evergreen Restoration – Jerry Trcka
W7619 Walnut Drive – Spooner, WI 54801
(715) 635-8629, or (715) 520-7876 (cell)
E-Mail = jdgauges@yahoo.com**

For more information on history of the JD-H Tractor over its years of production, see our main book, **John Deere Model "H" Restoration Guide**. Go to Home Page to order. ++++