

**Gallery of Radiator Bolt Sets, Styled Tractors  
From JDHPUBS.COM**

9-26-2010

**Table of Contents**

**This gallery illustrates radiator bolt sets for the following tractors:**

<u>Model and Serial Number Ranges</u>	<u>Set Part No.</u>
Model "A", A477000-up, all variations, AR-AO 272,000-up	JDH900
Model "B", B60000-up, all variations	JDH901
Models G & GM, G13000-up, all variations	JDH903
Model "H", H1000-up, all variations	JDH904
Model "D", D143800-up, all variations	JDH918
Model "R", R1000-up, all variations	JDH926

**Commercial Use of Imagery:**

Any commercial use of technical data and photographic material from this website without written consent of JDHPUBS.COM is expressly prohibited.

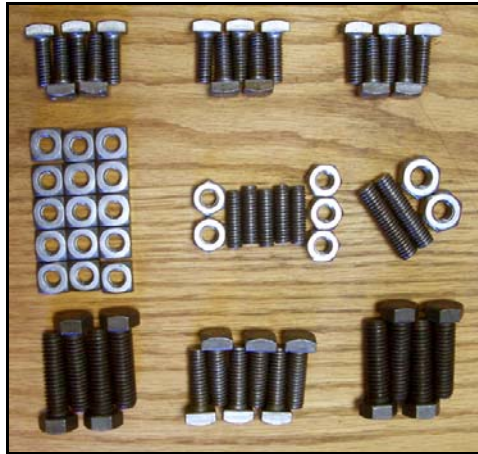
**And Now – Those Images!**

## JDH900



Styled JD-A (A477000-up) + AR-AO 272,000-up

## JDH901



Styled JD-B (B60000-up) + JD-50 Note, for tractors B306600-up, and for all JD-50 some of the square nuts will be needed.

## JDH903



Styled JD-G (G13000-up)

## JDH904



Model H, All Serial Numbers

## JDH918



Styled JD-D (D143800-up)

## JDH926



Model "R" Tractors (R1000-up)