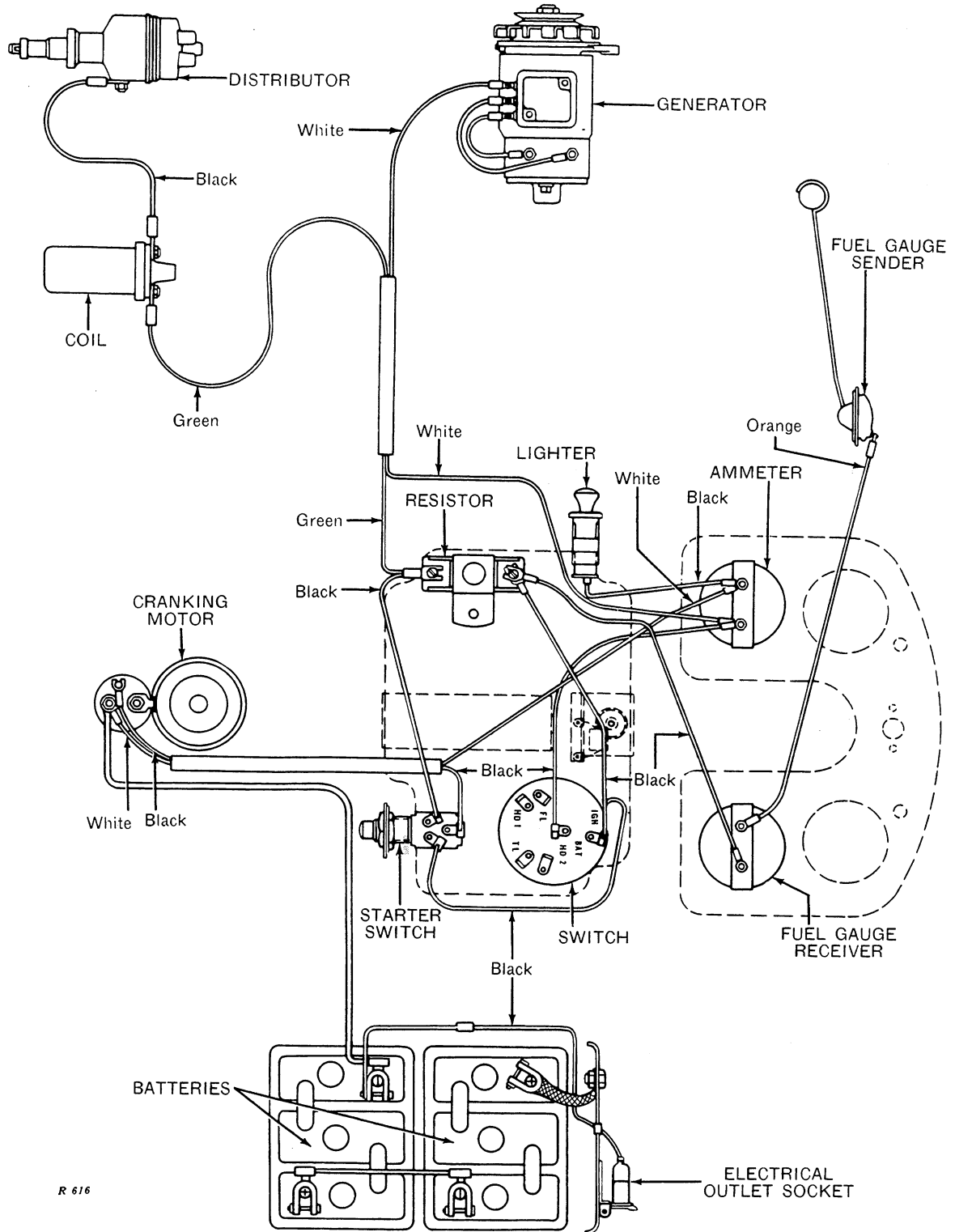


"530," "630," AND "730" SERIES
GASOLINE AND ALL-FUEL TRACTORS
Generator, Ignition, and Starting Wiring

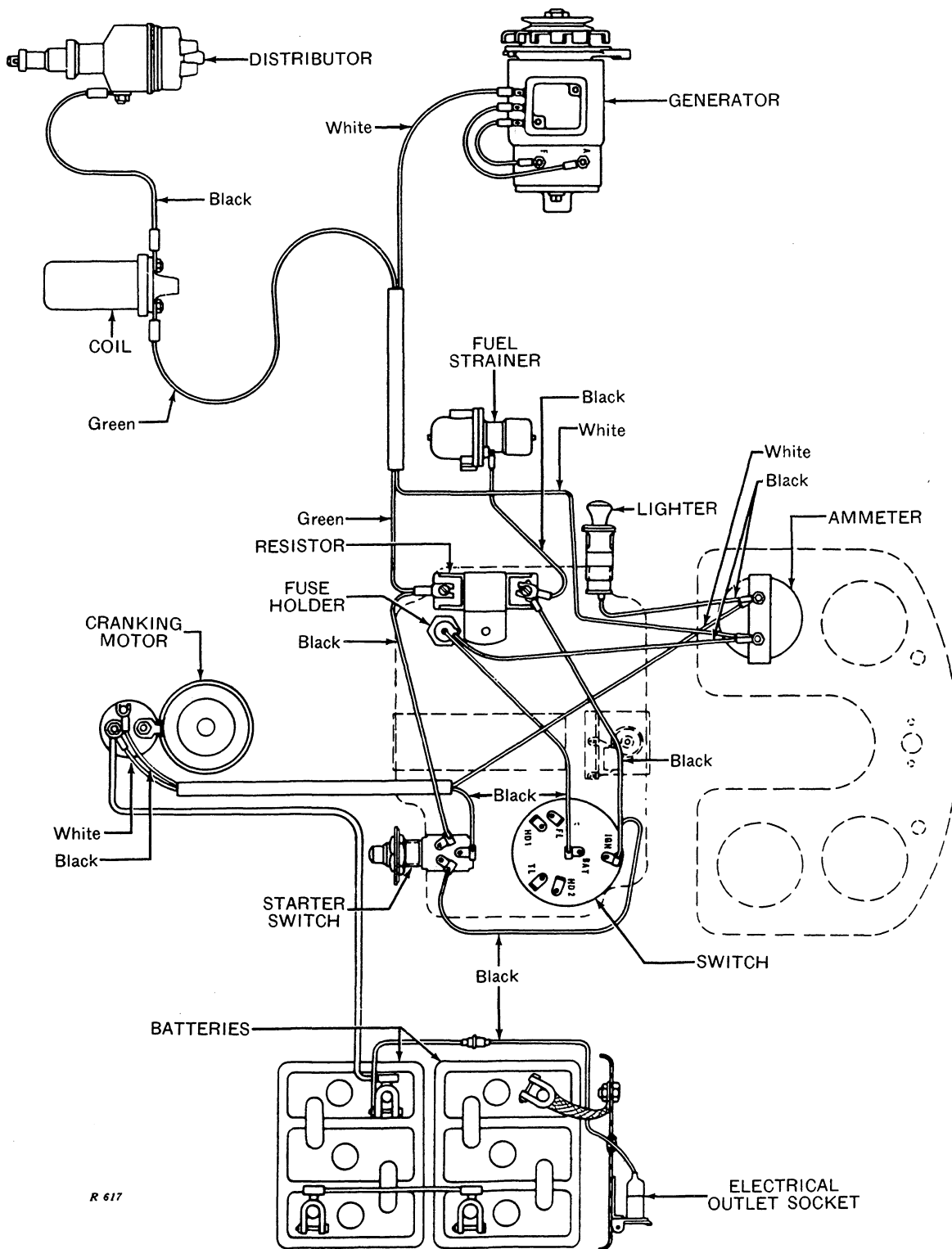


R 616

(For "LAMP WIRING," see page 80-5-23)



"530," "630," AND "730" SERIES
LP-GAS TRACTORS
Generator, Ignition, and Starting Wiring



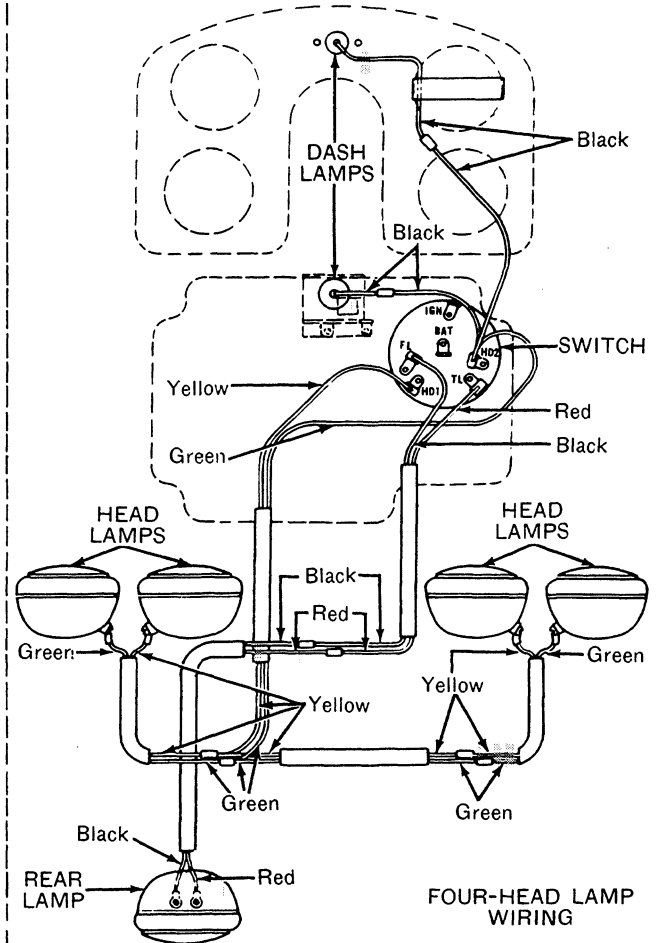
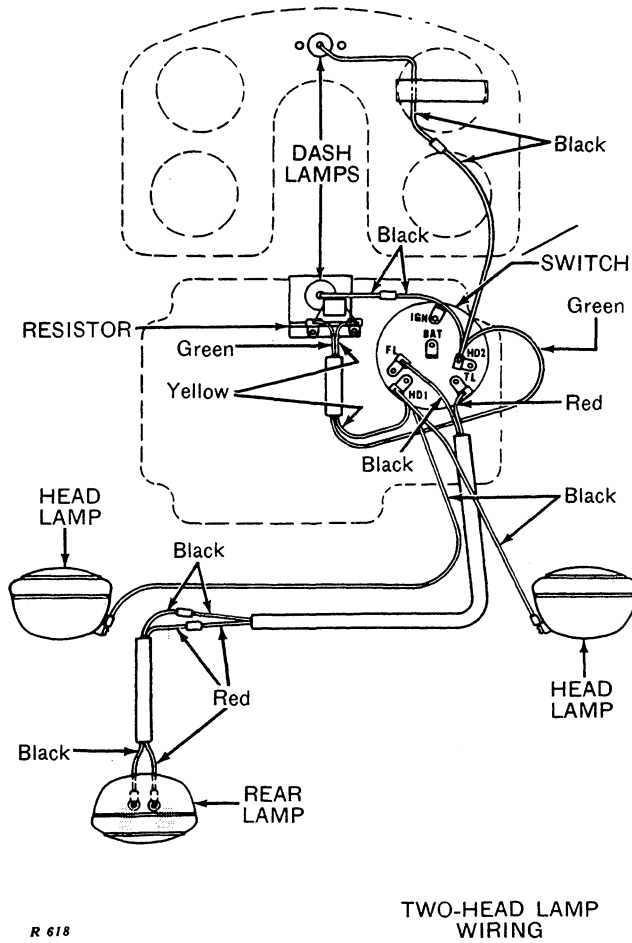
R 617

(For "LAMP WIRING," see next page)

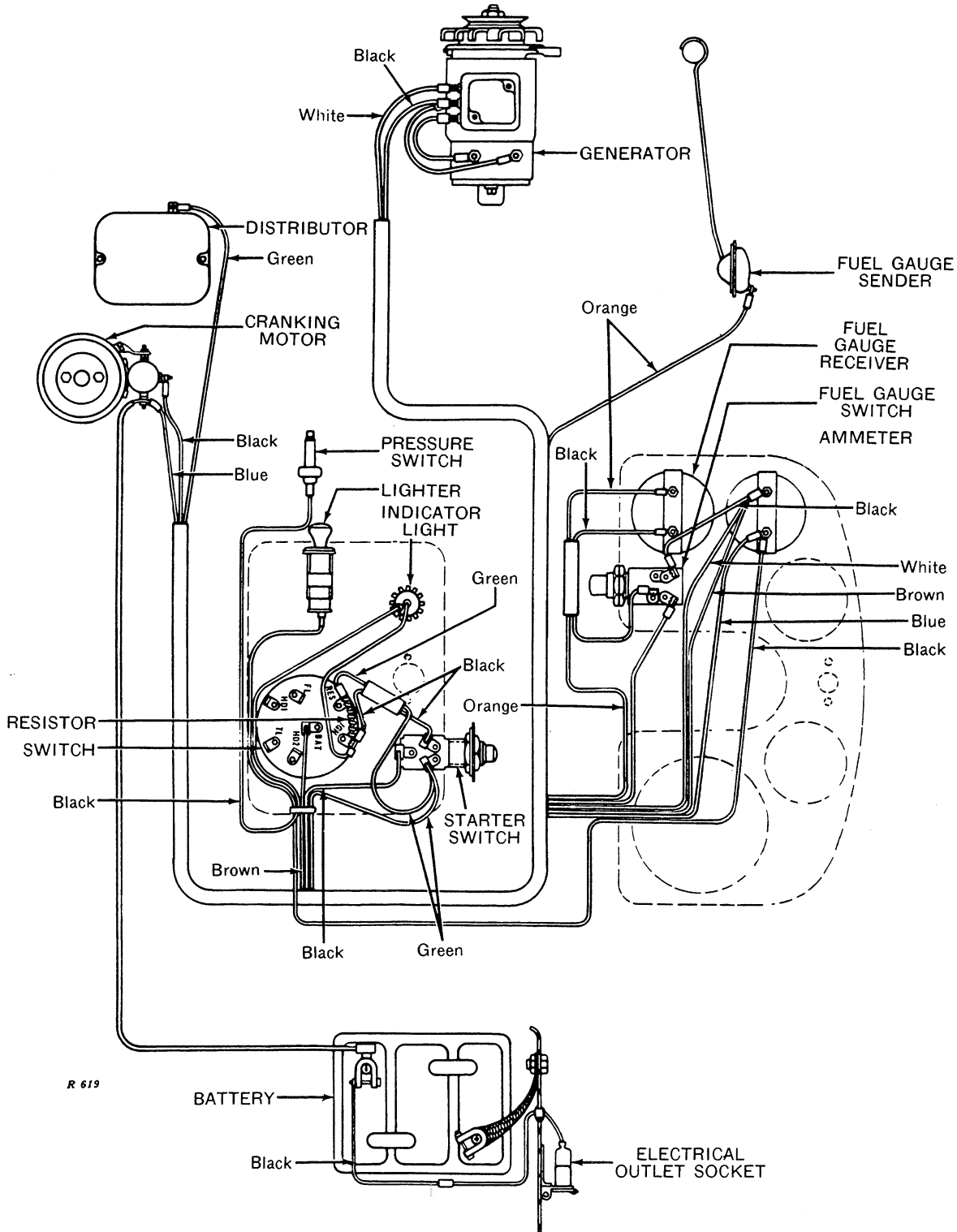


"530," "630," AND "730" SERIES
GASOLINE, ALL-FUEL, AND LP-GAS TRACTORS --Continued

Lamp Wiring

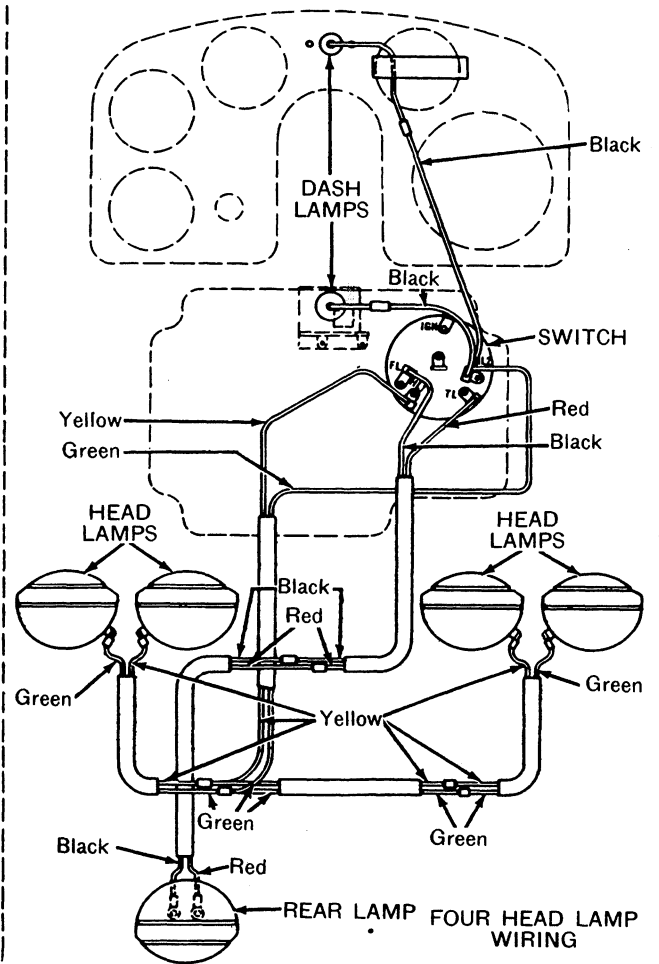
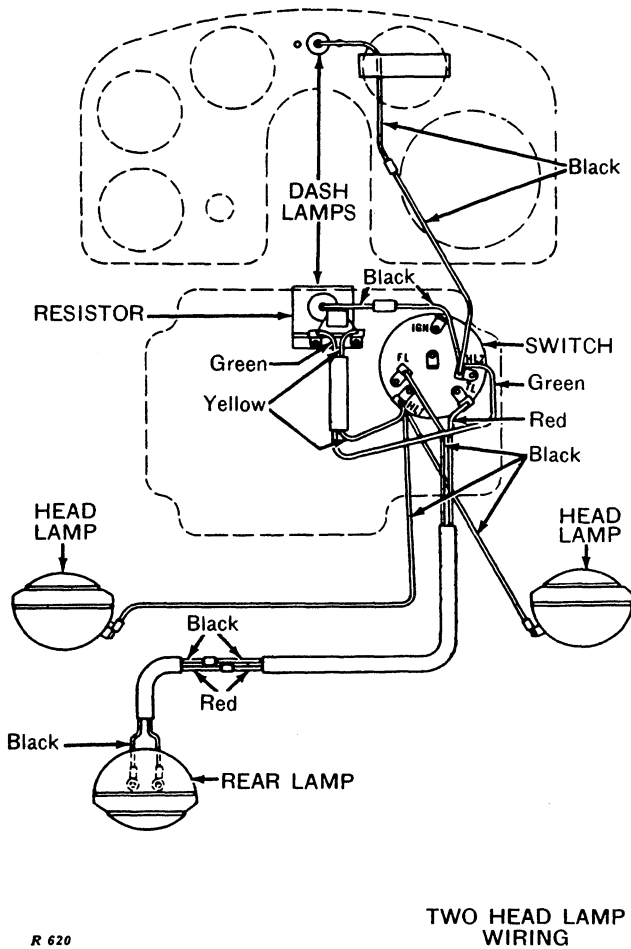


**"730" SERIES GASOLINE ENGINE-CRANKED
DIESEL TRACTORS
Generator, Ignition, Starting, and Lamp Wiring**



"730" SERIES GASOLINE ENGINE-CRANKED
DIESEL TRACTORS—Continued

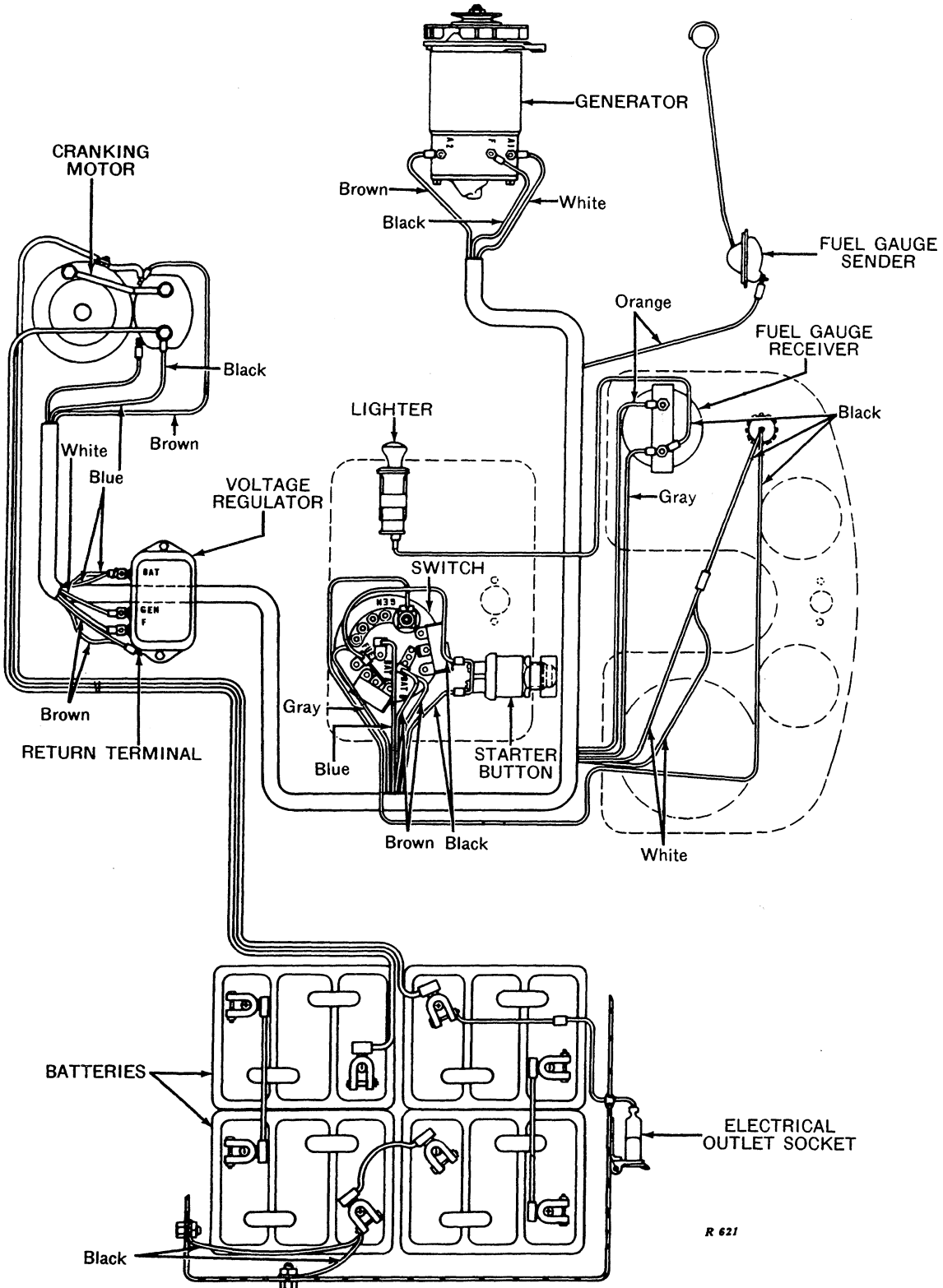
Lamp Wiring



R 620



**"730" SERIES ELECTRICALLY-CRANKED
DIESEL TRACTORS**
Generator, Ignition, and Starting Wiring



R 621



"730" SERIES ELECTRICALLY-CRANKED
DIESEL TRACTORS—Continued

Lamp Wiring

