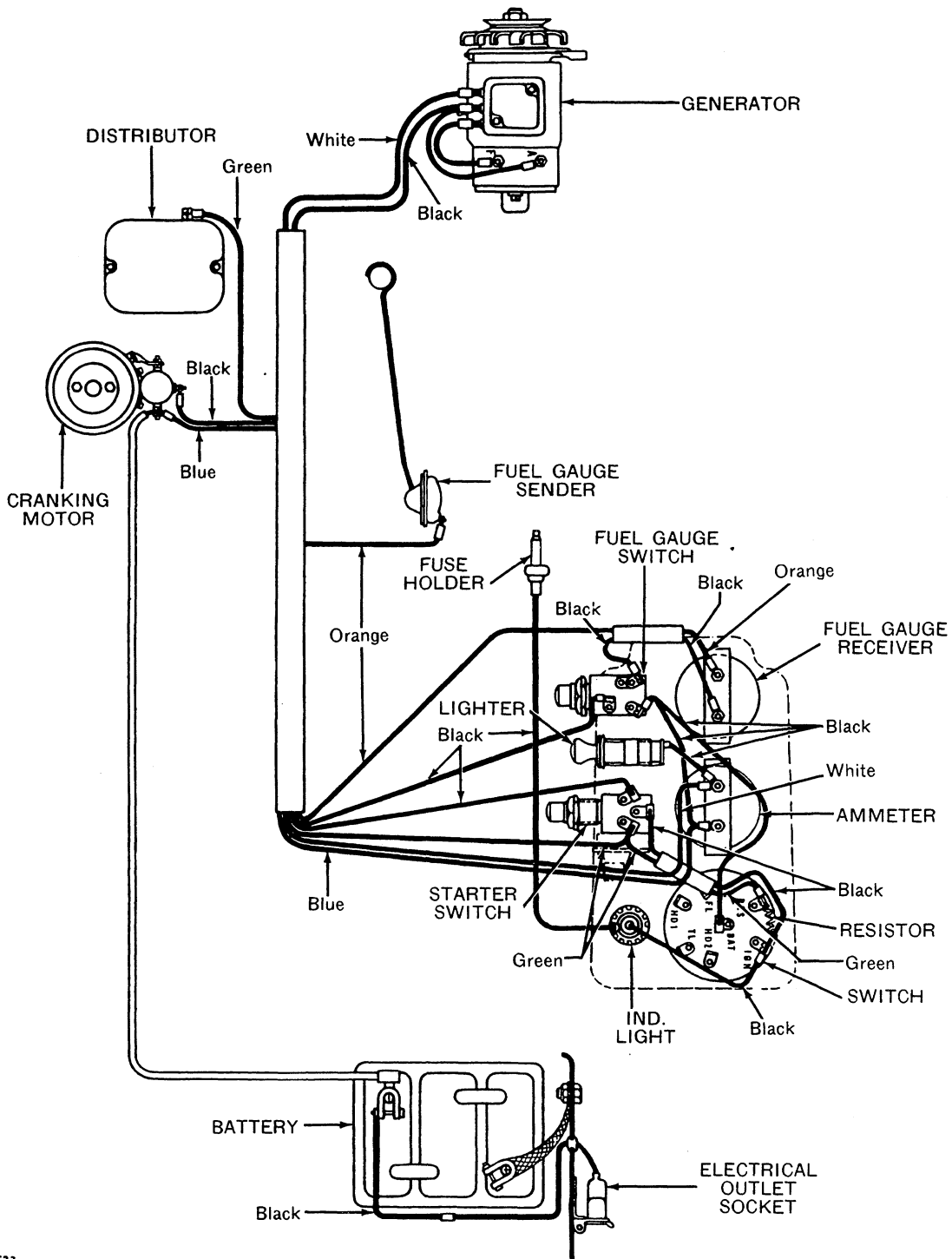


"830" SERIES DIESEL TRACTORS
Generator, Ignition, and Starting Wiring (Gasoline Engine-Cranked)

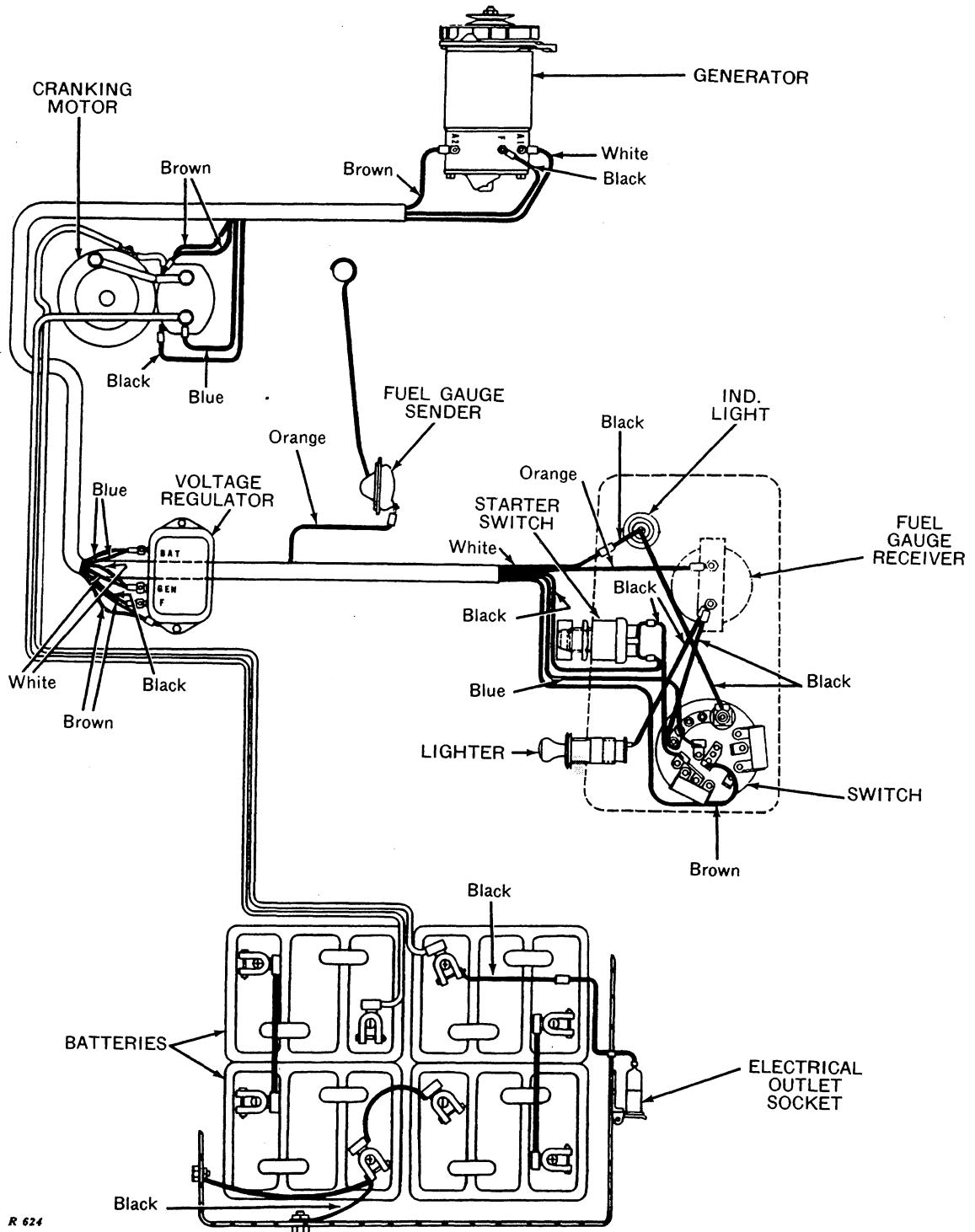


R 623

(For "LAMP WIRING," see page 80-5-30)



"830" SERIES DIESEL TRACTORS -- Continued
Generator, Ignition, and Starting Wiring (Electrically-Cranked)



R 624

(For "LAMP WIRING," see next page)



"830" SERIES DIESEL TRACTORS—Continued

Lamp Wiring

